

141
MAY 7 1895

U. S. S. "Columbia."



CORRECTED JUNE 20TH 1895.

COLUMBIA

SCALE 1/2" = 1' FOOT.
0 5 10 15 20 25

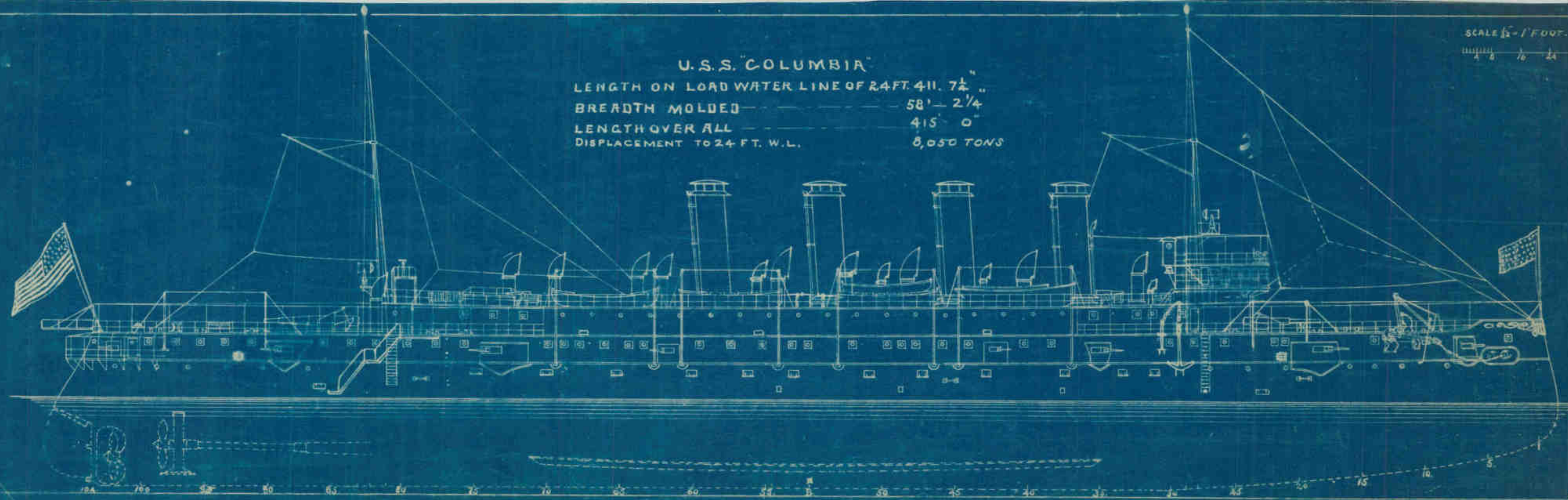
U.S.S. "COLUMBIA"

LENGTH ON LOAD WATER LINE OF 24 FT. 4 1/2 "

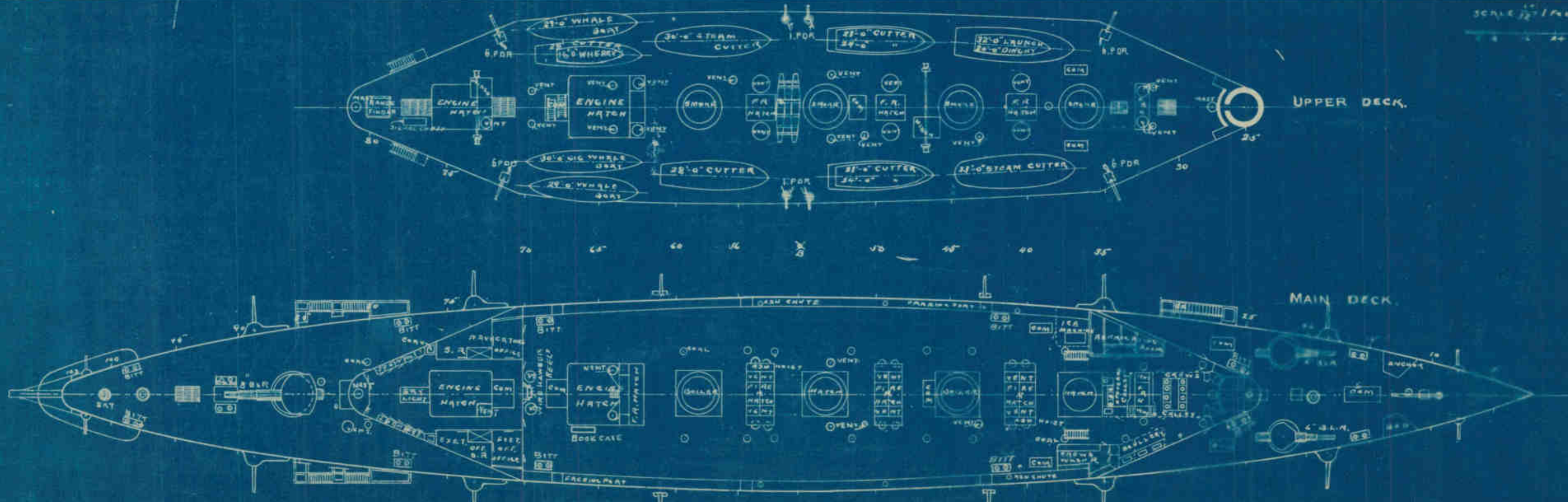
BREADTH MOLDED ----- 58' - 2 1/4 "

LENGTH OVER ALL ----- 415' 0 "

DISPLACEMENT TO 24 FT. W.L. 8,050 TONS

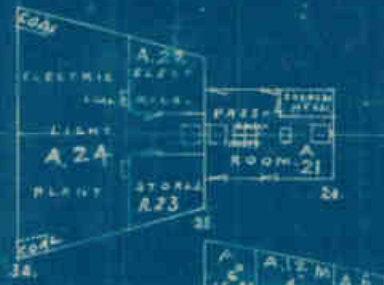
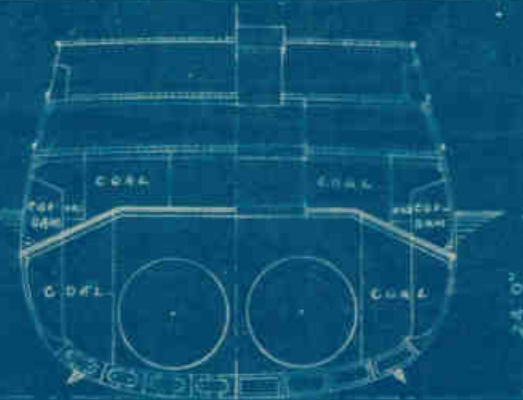
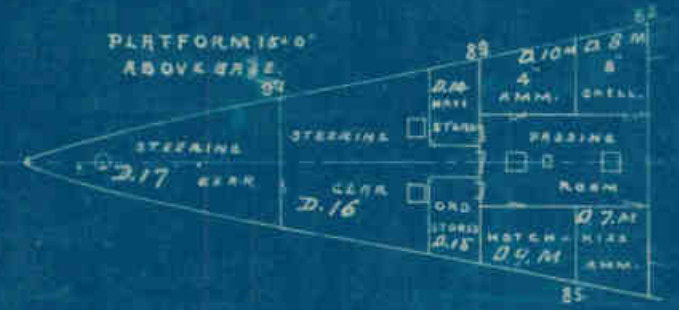


B.L.R.



UPPER DECK.

MAIN DECK.



PLATFORM 15'0" ABOVE BASE.



PLATFORM 11'9" ABOVE BASE.

HOLD

